

# SHURflo



## PRODUCT DATA SHEET MODEL: 8000-547-189

INTERNAL BY-PASS

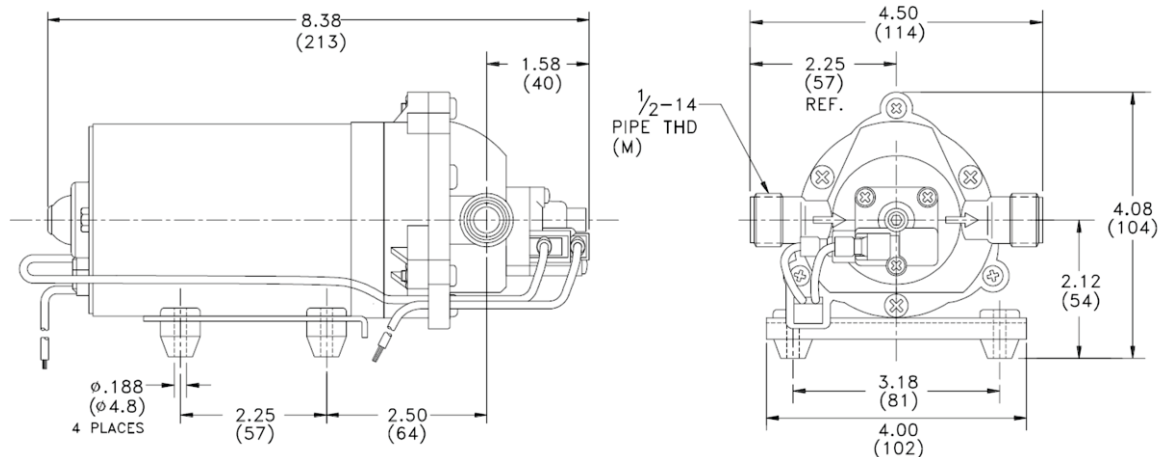
### SPECIFICATIONS:

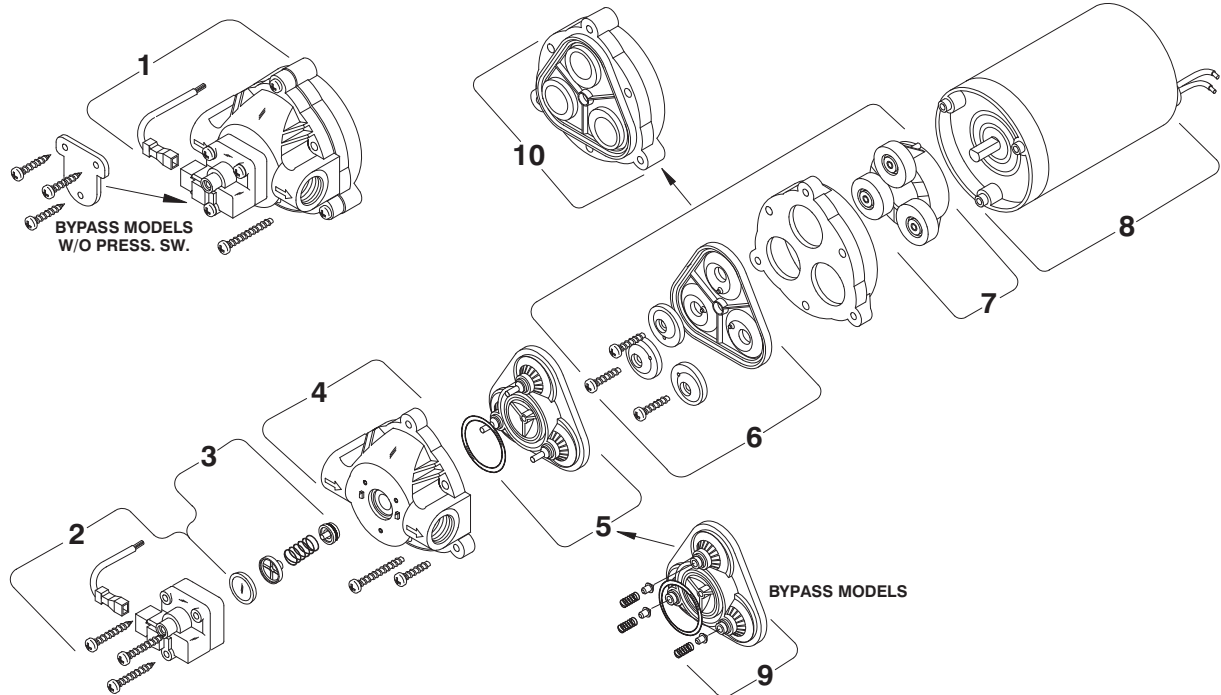
<b>MODEL NUMBER:</b>	8000-547-189
<b>PUMP DESIGN:</b>	Positive Displacement 3 Chamber Diaphragm Pump
<b>CHECK VALVE:</b>	(1 – Way Operation) Prevents Reverse Flow
<b>CAM:</b>	3.0 Degree
<b>MOTOR:</b>	Permanent Magnet, P/N 11-111-00
<b>VOLTAGE:</b>	12 VDC Nominal
<b>PRESSURE SWITCH:</b>	Adjustable Shut – Off (Range 80-100 PSI) Factory Set @ 107 PSI, Turn on 85 PSI ± 5 PSI
<b>LIQUID TEMPERATURE:</b>	170 Degrees Fahrenheit (77 Degrees Centigrade) Max.
<b>PRIME:</b>	Self - Priming Up To 10 Ft. Vertical, Max. Inlet Pressure 30 PSI (2.1 Bar)
<b>PORTS:</b>	3/8"-18 NPT Female
<b>MATERIAL OF CONSTRUCTION:</b>	
<b>PLASTICS –</b>	Polypropylene
<b>VALVES –</b>	Viton
<b>DIAPHRAGM –</b>	Santoprene®
<b>FASTENERS –</b>	Zinc Plated Steel
<b>NET WEIGHT:</b>	4.7 Lbs (2.13 Kg)
<b>DUTY CYCLE:</b>	Intermittent (See Temperature Rise Chart)
<b>TYPICAL APPLICATIONS:</b>	Agricultural Spot Spraying with adjustable spray nozzles

### PERFORMANCE:

	MAX	SHUTOFF	SHUTOFF DIFF.
	1.8 GPM	107 PSI	15-35 PSI
	6.8 lpm	7.4 Bar	1 - 2.4 Bar

### DIMENSIONS:




**DESCRIPTION**
**PART No.**

1) Complete Pump Head	N/A
2) Switch Assembly	94-375-18
3) Check Valve Assembly	94-374-05
4) Upper Housing	94-374-08
5) Valve Assembly (Standard)	N/A
6) Diaphragm	N/A
7) Drive Assembly	N/A
8) Motor	94-11-111-00
9) Valve Assembly (Bypass)	94-391-46
10) Solid Diaphragm/Drive Assembly	94-385-32

**Head Office**

Pentair AU/NZ: 1-21 Monash Drive,  
Dandenong South, Vic 3175

**Australia**
National Customer Service:

Phone: 1300 137 344

Fax: 1800 006 688

National Dealer Locator:

Phone: 1800 664 266

Email: [au.sales@pentair.com](mailto:au.sales@pentair.com)

Web: [www.pentair.com.au](http://www.pentair.com.au)

**New Zealand**
National Customer Service:

Phone: 0800654112

Fax: 0800 806 642

National Dealer Locator:

Phone: 0800 664269

Email: [nz.sales@pentair.com](mailto:nz.sales@pentair.com)

Web: [www.pentair.co.nz](http://www.pentair.co.nz)

**International Australia/New Zealand**

Phone: +61 3 9709 5800

Fax: +61 3 9709 5888